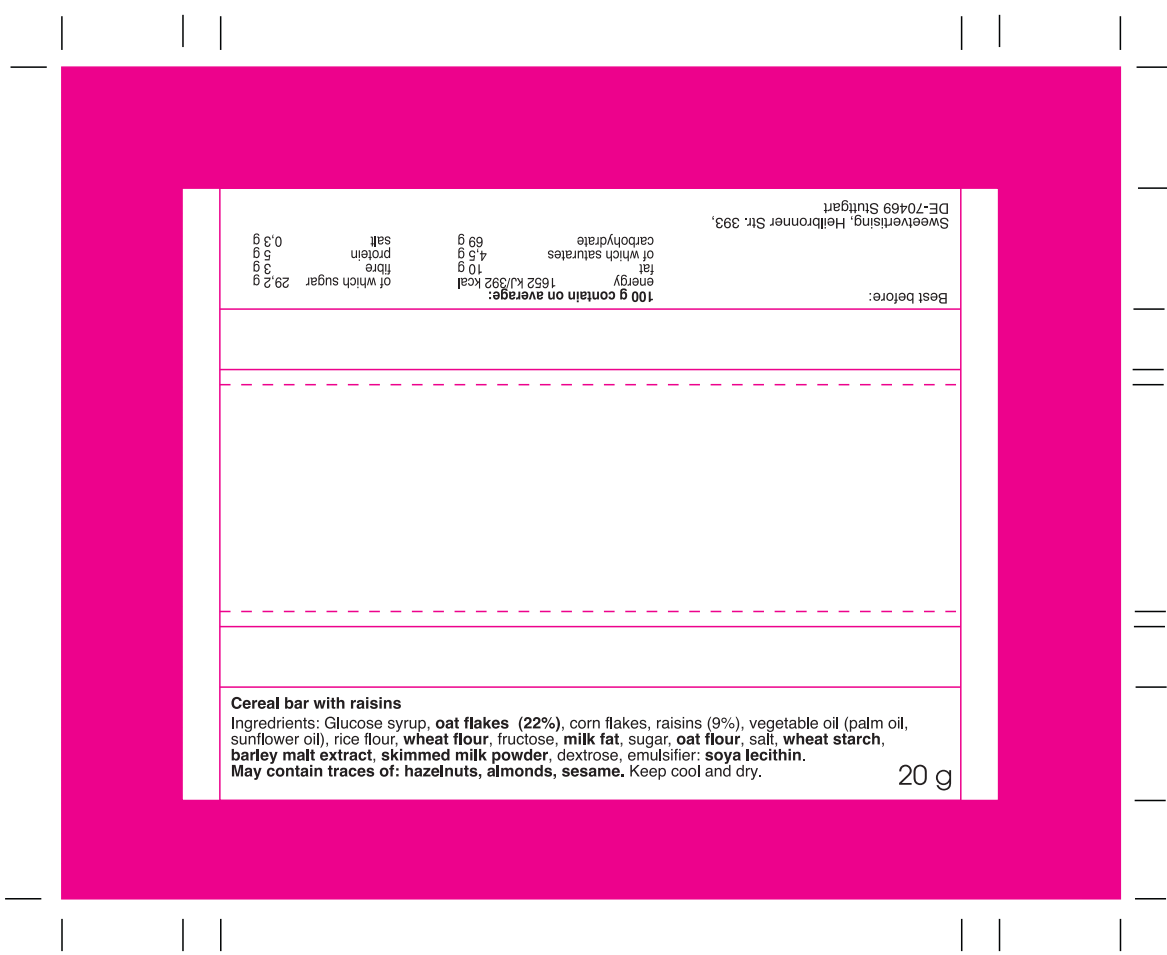


Wit is bedrukbaar.
 Roze wordt wit geprint.



DE-70469 Stuttgart
 Sweetvertising, Heilbronner Str. 393,

Best before:	100 g contain on average:	energy	1652 kJ/392 kcal
		fat	10 g
		of which saturates	4,5 g
		carbohydrate	69 g
		protein	5 g
		of which sugar	29,2 g
		fiber	3 g
		salt	0,3 g

Cereal bar with raisins
 Ingredients: Glucose syrup, **oat flakes (22%)**, corn flakes, raisins (9%), vegetable oil (palm oil, sunflower oil), rice flour, **wheat flour**, fructose, **milk fat**, sugar, **oat flour**, salt, **wheat starch**, **barley malt extract**, **skimmed milk powder**, dextrose, emulsifier: **soya lecithin**.
May contain traces of: hazelnuts, almonds, sesame. Keep cool and dry.

20 g